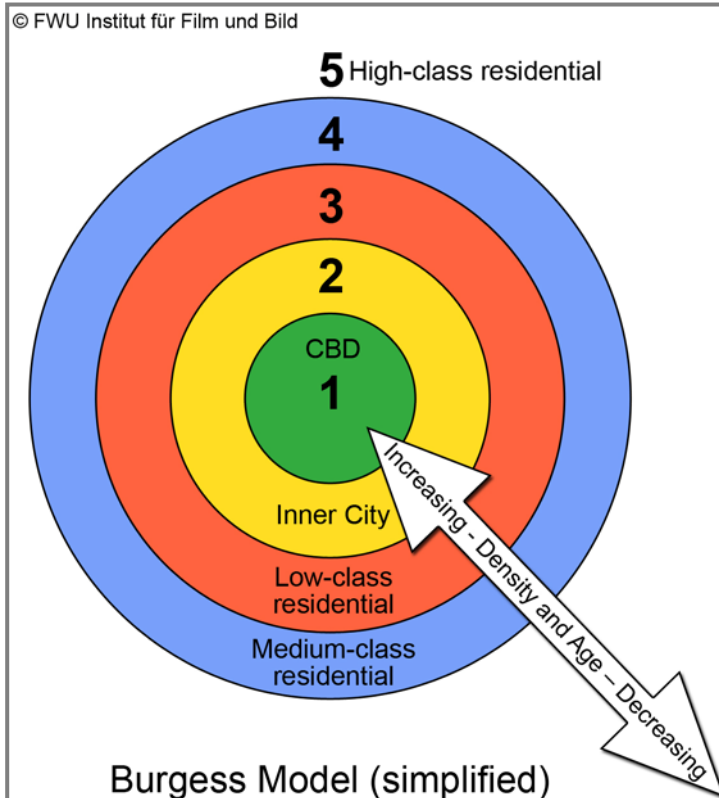


Name: Klasse:

Chicago and the Model of an U.S. American City – Solution



The sociologist Ernest Burgess created a model of an American city in 1923 (see diagram).

This ring model depicts urban usage in concentric rings from the city center to the periphery, dividing them into zones with different uses:

Zone 1: CBD with shops, offices and entertainment venues.

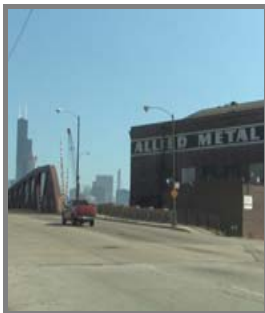
Zone 2: Transition zone of mixed residential and commercial uses. Often populated by immigrants.

Zone 3: Working class residential homes, better standard of living than in Zone 2.

Zone 4: Better quality middle-class homes with detached houses and public housing.

Zone 5: Expensive neighborhoods for upper classes with big estates, located outside the city boundary.

1. The Burgess Model might seem old, but its basic structure still applies to Chicago. Sort the following pictures according to the different rings of the diagram.

Zone: **2**Zone: **5**Zone: **3**Zone: **4**Zone: **1**

2. Critically discuss the Burgess Model.

The model focusses on the social structure of a city.

Big industrial areas, sub-centers etc. are not incorporated or portrayed.