



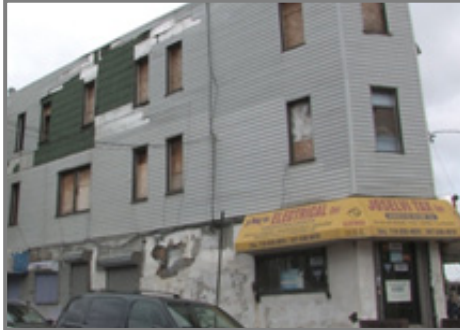
Name:

Klasse:

2. Since the 1960s the Manufacturing Belt has been in an economic crisis, shown in the pictures below. The Manufacturing Belt turned into the Rust Belt. Give possible reasons for the decline of each economic sector in the different locations. Write your answers under the pictures.



Abandoned steelworks in Pittsburgh



Former electric shop in New York



Closed car factory in Detroit

---

---

---

---

---

---

---

---

---

---

---

---

---

---

---

---

---

---

---

---

---

3. In recent years, the Manufacturing Belt has experienced a renaissance. Its decline in significance was at least partly balanced. Explain the changes underneath each picture.



Chemical company in Pittsburgh



Google office in New York



Corporate head office of GM in Detroit

---

---

---

---

---

---

---

---

---

---

---

---

---

---

---

---

---

---

---

---

---